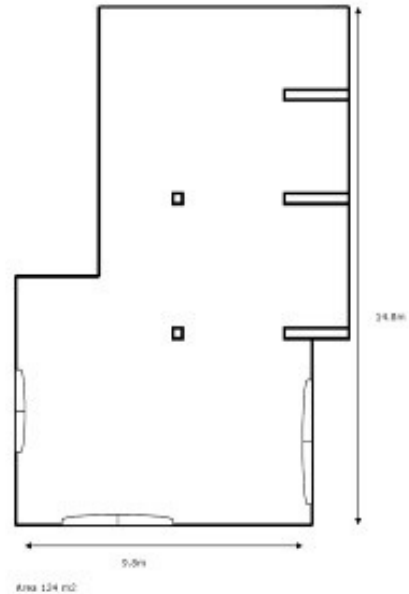


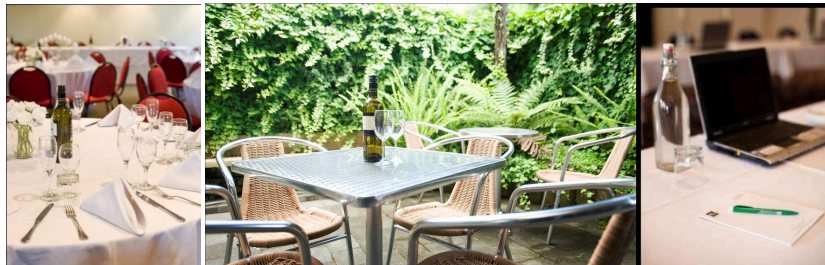
The Cornwall Room

Our largest conference room, The Cornwall Room offers modern décor and features a covered courtyard perfect for break out areas. It is also well suited for company dinners and awards, banquets, corporate meetings and events and mini tradeshow.

Conference Configuration			
Set up Style	No's	Dimensions	
Theatre	140	Area (m2)	124
Classroom	60	Room Size	9.8m x 14.5m
U-Shape	40	Ceiling Height	3.5m
Boardroom	30	Door Width	2.4m
Cocktail	150	Door Height	1.9m
Banquet	90		



Full Day Room Hire (4+ hours)	\$650	Half Day Hire (>4 hours)	\$400
----------------------------------	-------	-----------------------------	-------

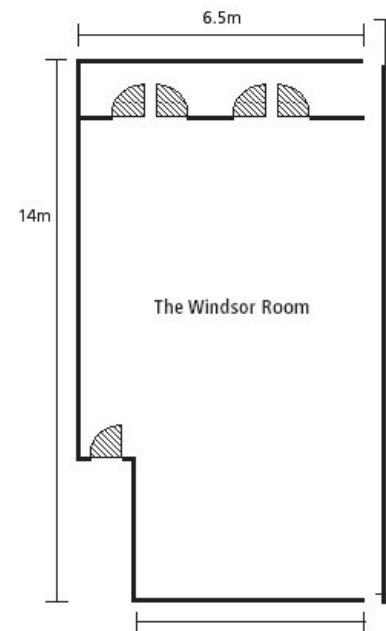




The Windsor Room

Our most popular training/seminar room, its upstairs location ensures a quiet environment and is large enough to accommodate up to 80 people. Features include: Natural light, broadband Internet, air conditioning, breakout balcony, high ceiling.

Conference Configuration			
Set up Style	No's	Dimensions	
Theatre	70	Area (m2)	90
Classroom	40	Room Size	14m x 6.5 m
U-Shape	30	Ceiling Height	3.5m
Boardroom	30	Door Width	2.4m
Cocktail	80	Door Height	1.9m
Banquet	60		



Full Day Room Hire (4+ hours)	\$550	Half Day Hire (>4 hours)	\$400
----------------------------------	-------	-----------------------------	-------

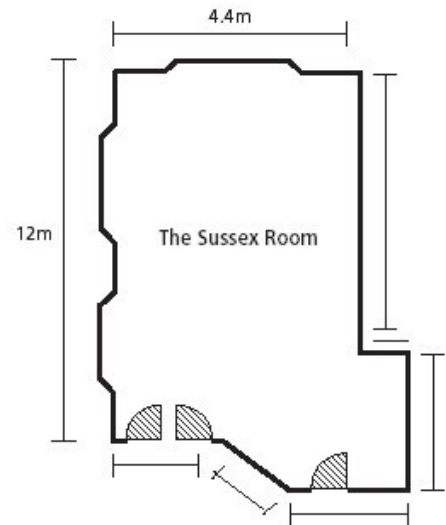




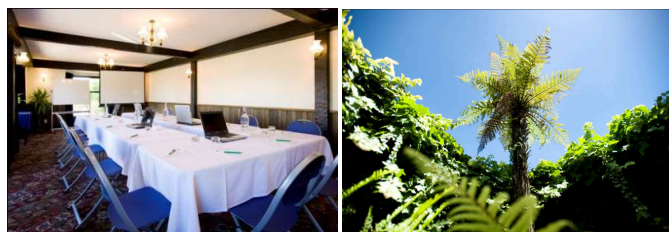
The Sussex Room

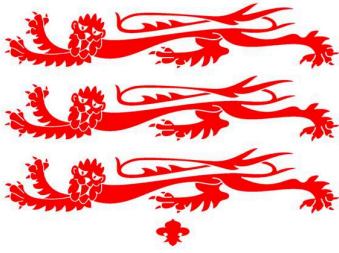
The Sussex room seats up to 40 and offers wide doorways for wheelchair access, a popular set-up is a 15 person U-shaped classroom with additional space to move about or for displays. Features include: Broadband Internet and individually controlled air conditioning, wheelchair access.

Conference Configuration			
Set up Style	No's	Dimensions	
Theatre	30	Area (m2)	45
Classroom	20	Room Size	12m x 4.4m
U-Shape	18	Ceiling Height	2.4m
Boardroom	20	Door Width	3.5m
Cocktail	40	Door Height	1.9
Banquet	25		



Full Day Room Hire (4+ hours)	\$450	Half Day Hire (>4 hours)	\$300
----------------------------------	-------	-----------------------------	-------

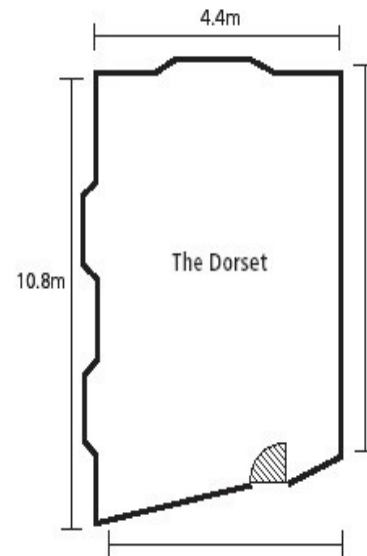




The Dorset Room

Full of the old world charm featured throughout the rest of the hotel, the Dorset room doubles as our guest lounge and is well suited for smaller, informal meetings or cocktail functions. It is also perfect to use as a registration area for large functions in the other rooms. Features include: Natural light, broadband internet, wheelchair access.

Conference Configuration			
Set up Style	No's	Dimensions	
Theatre	25	Area (m2)	40
Classroom	15	Room Size	10.8mx4.4m
U-Shape	15	Ceiling Height	2.4
Boardroom	20	Door Width	5
Cocktail	40	Door Height	1.9
Banquet	20		



Full Day Room Hire (4+ hours)	\$300	Half Day Hire (>4 hours)	\$250
----------------------------------	-------	-----------------------------	-------

