



EST. 1882

RBN. 2018

WELDEER



WELDER

WELCOME	3
FLOOR PLAN	5
THE VENUE	8
EVENT MANAGEMENT & PLANNING	11
CATERING	13
BEVERAGE	15
SUPPLIERS	16
TERMS & CONDITIONS	18



WELCOME TO THE WELDER

Discover something new around every corner of this eclectic destination in the heart of South Town. The Welder is an elegant space for parties, corporate functions and intimate celebrations which evokes urban chic and effortless grace for when your event needs to go above and beyond.

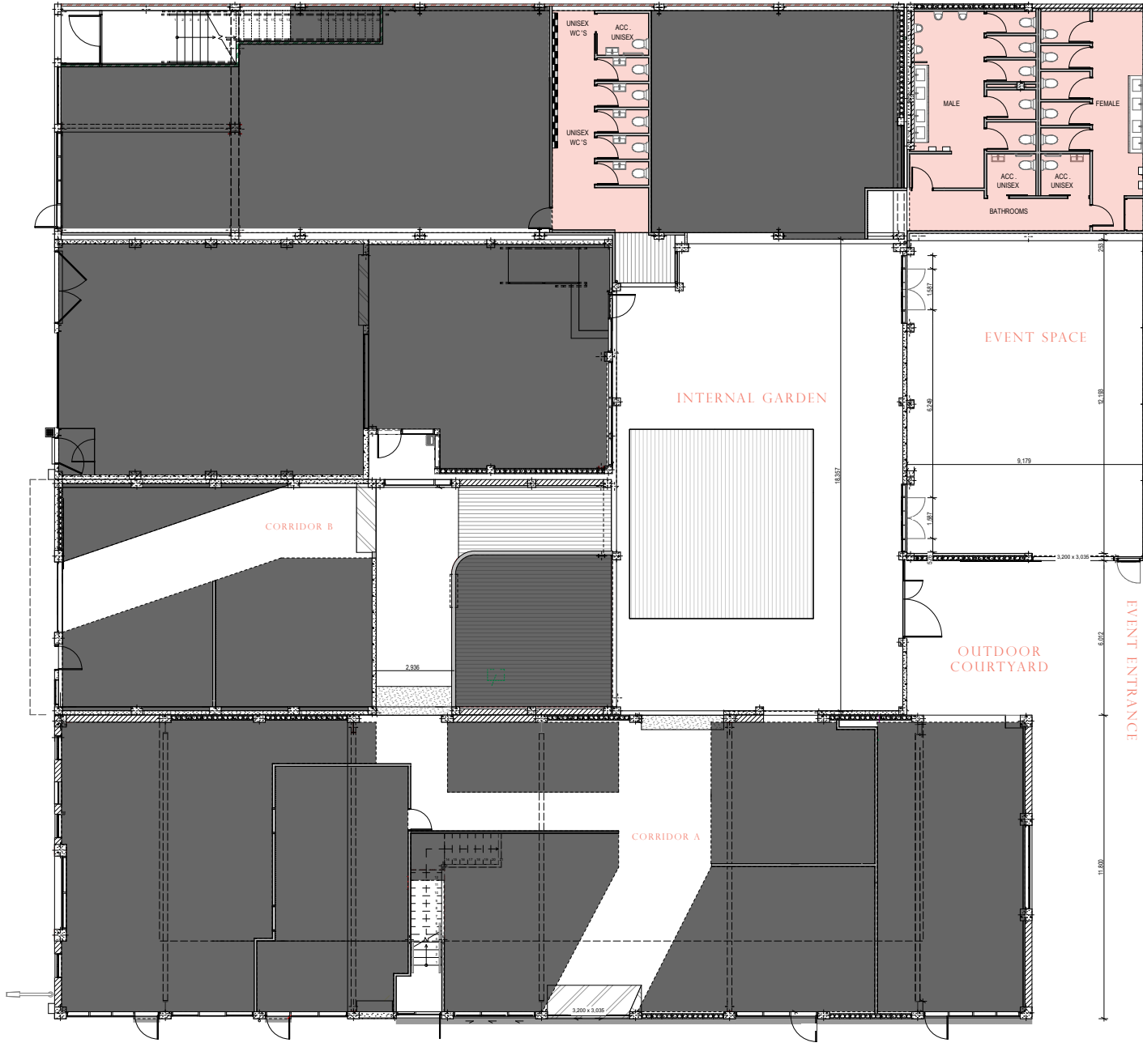
An eclectic mix of old and new, The Welder can be intimate and elegant or lively and loud – it's a fun space full of personality, ready for anything to make your occasion memorable as we believe memorable events are created when your ideas can shine in the right place, at the right time.

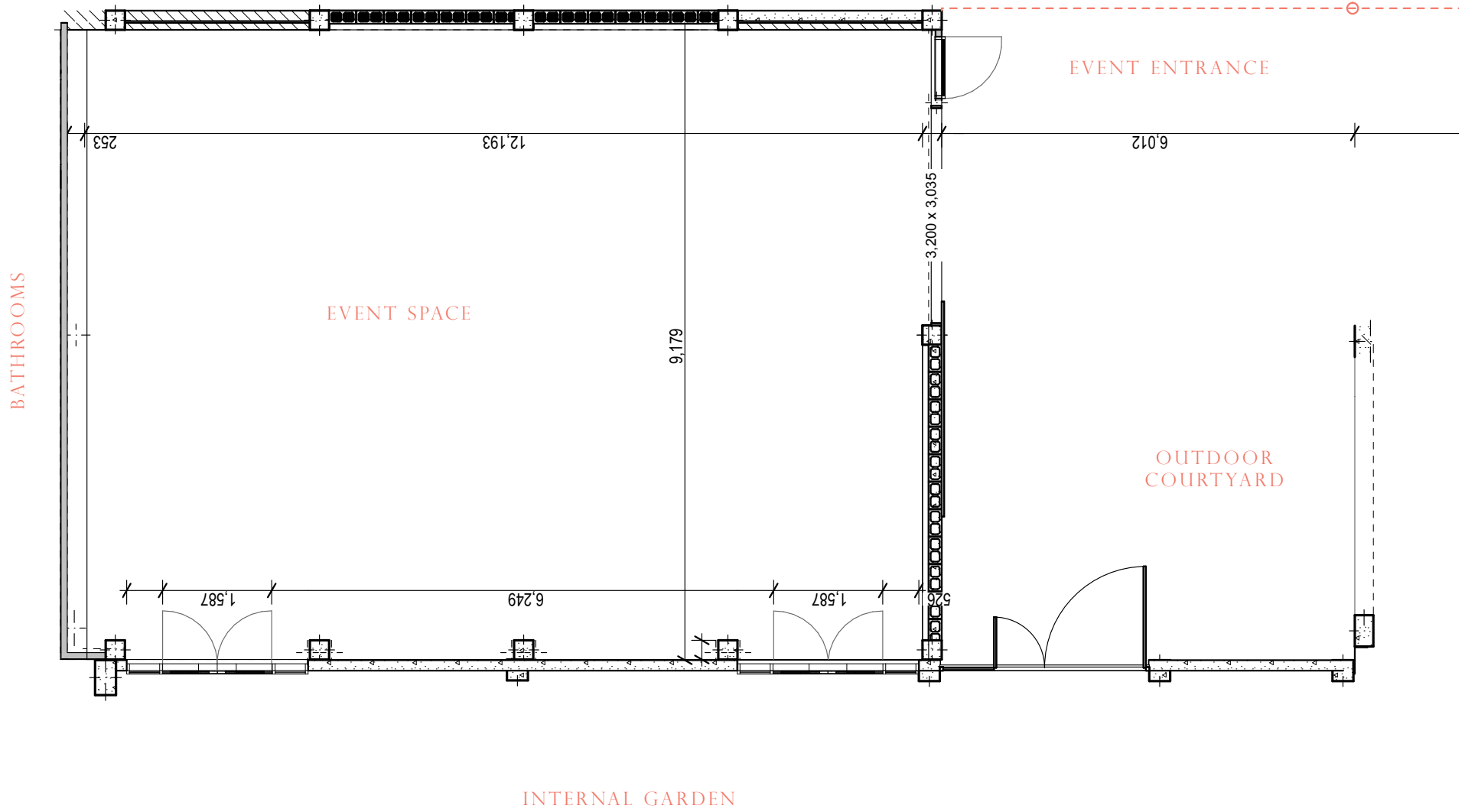
At The Welder we are all about crafting special moments and memories with industrial charm in a sleek and sophisticated setting.



THE VENUE

We are all about crafting special moments and memories with industrial charm ————— Photograph // Charlotte Sowman Photography







THE VENUE

The Welder can be intimate and elegant or lively and loud — Photograph // Susannah Blatchford

THE VENUE

113 Sqm Industrial space with recycled heritage wooden flooring this event space is the perfect blank space to create your perfect event.

Located at the rear of the complex with a dedicated events entrance, your guests will be captivated the moment they walk into the private outdoor courtyard area.

Then enter into this event oasis through the original green henderson track door, originally housed in the Landrover workshop and parts department back in the 60's, adding to the spaces rustic charm.

VENUE HIRE INCLUSIONS

Event Manager
(to assist with any planning throughout the event process)

Event Supervisor
(to attend to all on the day requirements)

In-house Sound system

WIFI access

1 x Security guard
(events over 50 pax)

Bar and Wait Staff
(including a Duty Manager)

Liquor license

Moveable pop up bar
(including ice and glassware)

Post venue clean

Rubbish removal

Paid Parking
(Welder Car Park, Street Parking along Welles Street)

CAPACITY NUMBERS

220 PAX ————— Cocktail style *(inside & outside courtyard area)*

150 PAX ————— Cocktail style *(inside only)*

80 PAX ————— Seated

ADDITIONAL EXTRAS

Catering Packages

Beverage Packages

Furnishings

Styling

Audio Visual Equipment



THE VENUE

Our event space is the perfect blank canvas to create your event — Photograph // Susannah Blatchford



THE VENU

113 Sqm Industrial space with recycled heritage wooden flooring — Photograph // Susannah Blatchford



EVENT MANAGEMENT & PLANNING

We can work with you as much or as little as required to plan the best party your guests have ever experienced.

From a small cocktail party, birthday celebration to a conference or seminar, engagement party or wedding we can help tailor and personalise the details for you and your guests.

At The Welder functions and events are what we understand and love, we are here to help you every step of the way in the planning and coordinator process. We also work with a number of amazing event planners and stylists and can put you in the right direction if required.

ONE THING WE KNOW
IT'S HOW TO THROW A
DAMN GOOD PARTY



CATERING



CATERING

The Welder caters for all events with our in house kitchen team, our menus reflect the best of what we believe our companies multiple inner city venues have to offer – These include Welles Street, Earl & Bottle + Stone.

The team has trained in a number of kitchens in both New Zealand and abroad, they have a passion for fresh and local food and we are always searching for new and exciting ideas to keep our menus fresh, creative and innovative.

Our catering options are suitable for all occasions, from celebrations with friends and family, corporate events to engagement parties or weddings. We cater to all budgets and food preferences, our team understands with events come a number of dietary requirements and are there to assist in the creation of a menu that is special to you and your day.

However if you have your hearts set on utilising an outside caterer for your special event, we are happy to discuss this option.

Full catering menu available on request



BEVERAGE

Our team is there to assist and create the best drinks list for your special events — Photograph // Susannah Blatchford



BEVERAGE

BEVERAGE

There is no party without an attractive drinks list and our team is there to assist and create the best drinks list for your special events. Whether it is local or international wines, free flowing champagne or a creative cocktail offering your event manager will work with you to personalise a drinks list to suit you and your event.

The Welder events have exclusivity to the Bar operation due to holding the Liquor Licence for the event space. Glassware and staffing are inclusive in the venue hire of the event space, a duty manager will oversee the event and beverage service and standard host responsibility rules will be applicable.

Full beverage list available on request

SUPPLIERS

With your guidance and vision we will point you in the right direction of suppliers we have worked with and put trust in to create the event exactly as you envisioned it, bringing to life your special day.

AV COMPANIES

Hangup Entertainment
Insight Audio Visual
Spectrum

CAKES

Burly Cakes
Cakes by Anna
Harper House
The Cake Eating Company

EVENT COORDINATION & PLANNING

Blank Space Events
Christchurch Weddings
Collective Concepts
Emma Newman
Event Goals
I Do For You

EVENT STYLING & THEMING

Cressy and Charmed
Design Studio
Hayley and Co
Kim Chan
The Event Boutique
The Little Hire Company

FLORISTS

Bourbon Rose
Flowerhead
Kim Chan
Mrs Bottomley's Flowers
SweetPea Weddings

FURNITURE & SMALL HIRE

Blank Space Events
Party Warehouse
The Hirer
The Little Hire Company
Truly Yours

MUSIC – BANDS

Assembly Required
Corner Sounds
Gumbo No. 5
Nick Lee
Puree
Rattle and Strum
Tina and the Tuners

MUSIC – DJ

Boogie Beats
Dj Pulse
Insight Audio Visual

PHOTOGRAPHY

Cassandra Kovacs
Kelly Shakespeare
Sarah Clements
Sophie Isabella
Susannah Blatchford

STATIONERY & SIGNAGE

Paperweight Design
The Little Paper Store



THE VENUE

Photograph // Susannah Blatchford — Vendors // Blank Space Events, Honey & Moss NZ, Paperweight Design, Truly Yours

TERMS & CONDITIONS

OPERATIONAL HOURS

The Welder is available for venue hire Monday to Sunday between the hours of 7.00am – 12.00am. The venue is licenced until 12.00am with beverage service to conclude at 11.30pm to ensure all guests have vacated the venue by 12.00am and all staff and contractors associated with the event by 1.00am. If you require earlier or later pack in and out times this will need to be arranged and approved with the Event Manager.

PACK IN / SET UP

The clients access time will be agreed with the Event Manager based on the venue hire. If there is no event booked the day before then access may be arranged for set up the day before at the discretion of management.

PACK DOWN

All pack down of the venue is to be completed at the end of the event unless previously arranged with management. If there is no event the following day equipment may be stored in the venue overnight and collected the following morning by 10.00am this must be discussed and proved with management prior to the event.

CATERING

Should you choose to book The Welder Events as your caterer, the kitchen will be included in your room hire. However access to the kitchen is for The Welder staff only.

Should you wish to bring in outside caterers, this can be discussed and approved with the Event Manager. Outside caterers will need to be self-sufficient providing their own kitchen area to work from and all the relevant documentation to cover health and safety and food preparation certification. Your Event Manager will be able to assist with this where required.

BEVERAGE

The Welder events have exclusivity to the Bar operation due to holding the Liquor Licence for the event space. Beverage staff and a duty manager are included in the venue hire fee – staffing numbers will be discussed once numbers and event details are confirmed.

BYO of sponsored alcohol and event stock will be approved at the discretion of The Welder Management and will incur a corkage fee, glassware hire fee and any other associated cost with the serving of this alcohol will be charged to the client.

SECURITY

The venue hire fee is inclusive of one security guard to be onsite for the duration of your event for events over 50 persons. It is the Event Managers discretion to advise if additional guards will be required for your event and this will be on charged to the client.

TENTATIVE BOOKINGS

Tentative bookings can be pencilled into the calendar and will be held for 1 month, unless the date is queried by another prospective client. In this case you will have 48 hours to confirm your booking including the payment of your deposit.

CANCELLATIONS

If the client cancels their function or event, the cancellation must be provided to the Event Manager in writing. If in the instance an event is postponed the event deposit will be transferable to the new date selected within 12 months of the booking.

In the unlikely event that The Welder is unable to hold your event due to unforeseen circumstances you would be advised immediately. Alternative venue options and postponement dates would be the first course of action followed by cancellation discussions.

PAYMENTS

On confirmation of your event, your Event Manager will send you a full terms and conditions and booking confirmation form along with your deposit invoice. These forms are required to be completed and payment received in order to confirm your booking. A non-refundable deposit of \$500 is required to secure your event booking.

Full terms and conditions will be issued to the hirer upon confirmation of booking and paying event deposit.



THE VENU

The Welder Event space // 20 - 26 Welles Street — Photograph // Susannah Blatchford



WELDER

*20 - 26 Welles Street, Christchurch, Canterbury 8011
events@thewelder.nz // www.thewelder.nz/events-space*